



FINDING
SANCTUARY

THIRD PROGRESS REPORT

SUMMARY SPRING 2011



THE FINDING SANCTUARY PROJECT TEAM

PROJECT MANAGER

Tom Hooper
Tel: 01392 878327
tom.hooper@southwestfoodanddrink.com

PLANNING TEAM

MPA Planner

Louise Lieberknecht

Senior GIS Specialist

Shaun Lewin

GIS & Data Specialist

Tom Mullier

Planning & GIS Specialist

Alana Murphy

Economist

Rupert Haines

Tel: 01392 878321

rupert@southwestfoodanddrink.com

COMMUNICATIONS

Communications Coordinator

Hannah Carr

Tel: 01392 878328

hannah@southwestfoodanddrink.com

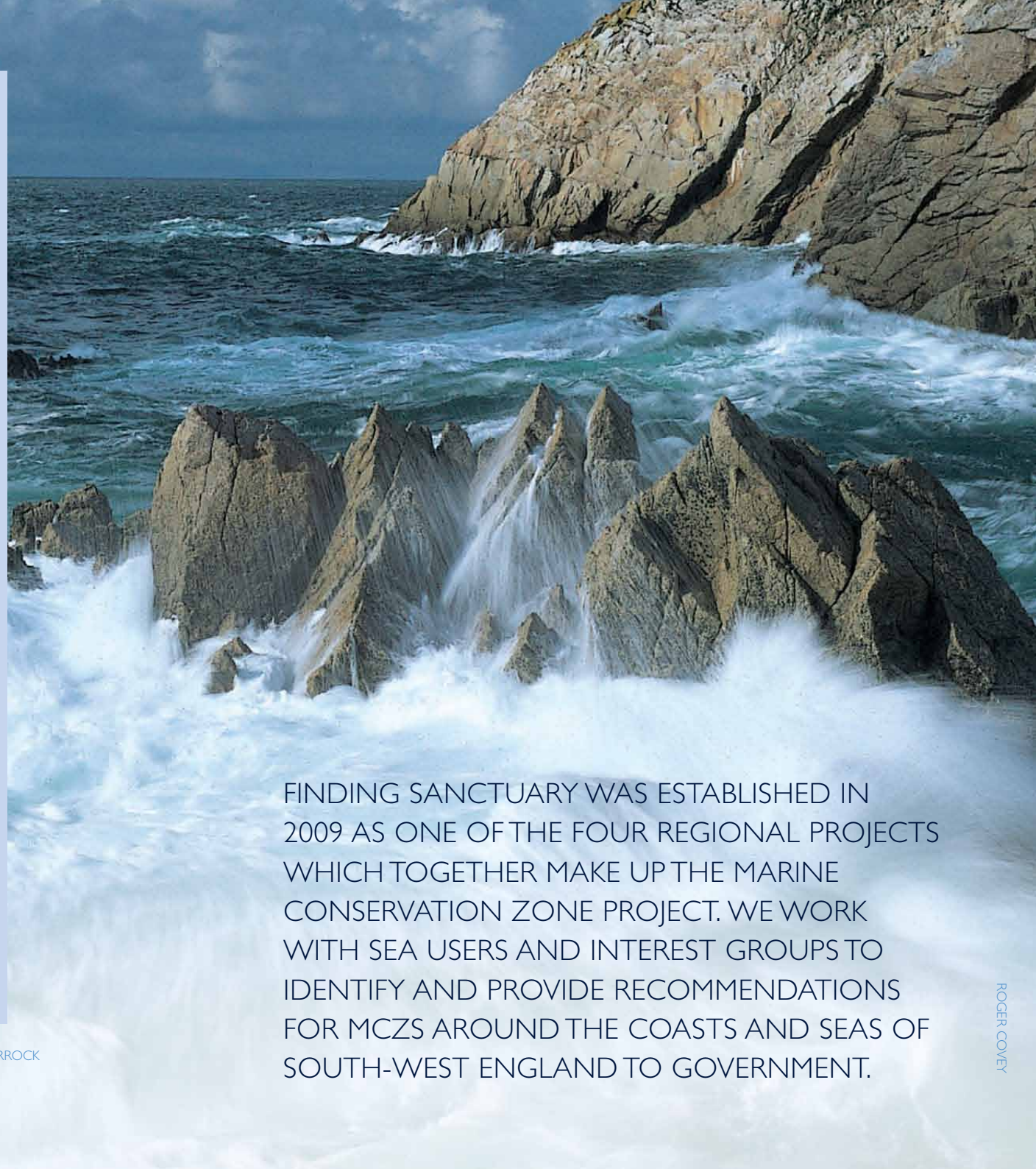
STAKEHOLDER LIAISON

David Murphy

Tel: 07814 781174

david.murphy@southwestfoodanddrink.com

This document is a quick summary of our 3rd Progress Report and the work of Finding Sanctuary and is not intended as a replacement for the full report. Behind this report there is a lot of site specific detail and background. If you would like more information then please consult the 3rd Progress Report available on our website.



FINDING SANCTUARY WAS ESTABLISHED IN 2009 AS ONE OF THE FOUR REGIONAL PROJECTS WHICH TOGETHER MAKE UP THE MARINE CONSERVATION ZONE PROJECT. WE WORK WITH SEA USERS AND INTEREST GROUPS TO IDENTIFY AND PROVIDE RECOMMENDATIONS FOR MCZS AROUND THE COASTS AND SEAS OF SOUTH-WEST ENGLAND TO GOVERNMENT.



THE STORY SO FAR...

Back in 2005, nine partner organisations set up Finding Sanctuary as a pilot project for Marine Protected Area planning. From the very beginning, they were keen to ensure that those who used the sea for leisure and livelihood would be at the heart of decision making.

In 2009, Finding Sanctuary became one of four regional projects that were tasked with identifying and recommending Marine Conservation Zones (MCZs) to Government. Our Steering Group was established in September 2009 and the network began to take shape through spring 2010.

The record of our planning meetings through 2010 show how the location of potential MCZs (pMCZs) has been

continuously changed and modified to try to accommodate the different interests of stakeholders round the table. As we approach the last few months of the project, we have a more stable set of sites and the focus has been around more fine scale modifications to boundaries.

This is now our 3rd Progress report to the Science Advisory Panel and it is an important milestone for our Steering Group, since it represents the culmination of many days of planning and collaborative negotiation. We are very close to meeting all of the targets set by the JNCC and Natural England, but it is important to note that further work will be undertaken before we produce our draft final report in June 2011.

A WINDOW ON OUR WORLD

Finding Sanctuary will be making recommendations to Government that have been developed regionally by knowledgeable stakeholders to enable the Government to make better and more informed decisions. There are some key features about the way this process is being run that make it truly collaborative.

1. Representatives on the stakeholder group have been selected for their knowledge, standing, experience and commitment to the process. These are people who have had to take on the responsibility to balance their own interests with the need to meet the ecological targets that have been set.
2. The notes of all local and regional planning meetings are available publicly on our website, which means that it is possible to follow exactly how decisions have been taken. Potential MCZs are very dynamic in the way that they are being developed and changed; and ensuring that our work in progress is visible is a very important aspect of our planning process.
3. The network is developing iteratively, this means that we set out to improve the network by refining sites and trying to incorporate the needs of different stakeholders by reviewing each version of the work and then applying what has been learnt to the next version.
4. Stakeholders have spent many meetings working with each other trying to meet the targets that they have been set. This means that they are focused on trying to understand each other's needs and interests and trying to come up with collectively generated options and then solutions.
5. Maps which show the areas which are important for marine life and human activities are the key planning tool for decision making. The Project Team have compiled relevant data and presented it in a form that can be used to help inform the work and decisions taken by stakeholders in planning meetings.
6. The key process mechanism that has been used is to encourage stakeholders to recognise that there will always be key uncertainties in the work. Rather than letting these stop recommendations being formulated they have been encouraged to express them openly and to state what assumptions they have made to overcome the uncertainties. In some cases they have also stated what they think should happen if their assumptions turn out to be wrong.





“This is the 3rd Progress Report that presents the work of Finding Sanctuary’s Steering Group to the National Science Advisory Panel. Over the last year, I have watched the South West’s network of Marine Conservation Zones being developed and shaped by our Steering Group members in a regular series of day-long planning meetings. In giving up their time to represent their sectors, they have shown an enormous amount of dedication to this challenging task.

We are close to meeting all of our ecological targets, but the greatest strength of this network is how it has been shaped collaboratively by different interests. More work remains to be done over the next few months before we make our final submission to Government, but this is the culmination of many days hard work by Steering Group members. By the end of this project, Steering Group members will have spent up to 30 days working with each other to put forward a jointly and collaboratively developed outcome for the region.”

Tom Hooper, Project Manager

THE STEERING GROUP

The Steering Group is made up of a range of sea user representatives who have the responsibility to develop and submit recommendations on a network of MCZs to Government. This has to be carried out to meet the Government’s ecological targets and ensuring that the views and perspectives of sea users across the region are considered and fed into the process.

Sectors represented:

- Inshore Commercial Fishing
- Offshore Commercial Fishing
- National Commercial Fishing
- Commercial Handliners
- Canoe and Kayak Paddle Sport
- Leisure Boating
- Scuba Diving
- Spearfishing
- Recreational Sea Angling
- Tourism
- Charter Boat Skippers
- Aggregates
- Offshore Renewables

Previous meetings:

- Regional Development and Economy
- Shipping and Ports
- Conservation NGOs
- Statutory Conservation
- Land Owners
- Scientific Advisors
- Enforcement
- Environment Agency
- Local MCZ Groups
- Historic Environment
- Military of Defence

- 28th September 2009
- 24th November 2009
- 11th February 2010
- 9th June 2010
- 7th October 2010
- 10th February 2010



THE WORKING GROUPS

The Working Groups consist of a subset of the Steering Group which were selected to carry out the detailed work and planning of MCZs on behalf of the Steering Group. The Joint Working Group formed in late 2010 from the Inshore Working Group and Offshore Working Group to work on the network as a whole.

Sectors represented:

Inshore Commercial Fishing
 Offshore Commercial Fishing
 National Commercial Fishing
 Leisure Boating
 Recreational Sea Angling
 Charter Boat Skippers
 Regional Development and Economy
 Conservation NGOs
 Statutory Conservation
 Land Owners
 Scientific Advisors
 Historic Environment

Previous meetings:

Joint Working Group	Offshore Working Group
15th December 2010	7th April 2010
13th January 2011	6th May 2010
	17th June 2010
	21st July 2010
Inshore Working Group	8th September 2010
27th April 2010	14th October 2010
28th June 2010	18th November 2010
27th July 2010	
9th September 2010	
20th October 2010	
24th November 2010	
8th December 2010	



MIKE CONNANNON

LOCAL GROUPS

Local Groups have been set up in Dorset, Devon, Somerset, Cornwall and the Isles of Scilly. Over the last year, they have played an important role in the shaping of potential MCZs in their inshore areas and helping bring local knowledge to the Working Groups. Meetings took place through September and October and January and February.



ROB MCINTYRE

THE DEVELOPING NETWORK OF MCZS

The maps show the current developing network of MCZs in the region. It consists of 54 potential MCZs (pMCZs) located in both the inshore (within 12 nautical miles) and offshore (outside of 12 nautical miles). The final network will protect the full range of marine biodiversity in our region, including rare and threatened marine habitats and species to contribute to the sustainability of marine resources in our seas for the future.



The pMCZs are doing well at meeting national ecological targets set in the Ecological Network Guidance (ENG) provided by Natural England and JNCC:

- The majority of pMCZs meet the minimum viable size and connectivity guidelines.
- All subtidal broad-scale habitats listed in national targets and present in the region have been met.
- Eight out of 10 intertidal broad-scale habitats detailed in our national targets are represented in the developing network. The two habitats not represented both have very limited distribution in the region.
- The developing network has achieved good replication of species of conservation importance. Some of these species have very few or no records in the region, so some of the targets for replication cannot be met.
- The developing network has achieved good replication of habitats of conservation importance. With limited records in our region, some of these can't be included within our network of MCZs.
- All three geological and geomorphological features of importance that fall within our region are represented within the developing network.

Working with renewable interests—two potential network variations

Most of the pMCZ sites are common between the two variations, but some sites within 12nm are different. The sites differ depending on whether or not it is assumed that MCZs and renewable energy installations are compatible, and can be located in the same place ("co-located"). The sites that differ between the two variations are highlighted on the maps.



POINTS TO NOTE

There are many assumptions, implications and uncertainties for each of the sites and these are detailed in the full report. Discussions on activity restrictions and management measures within pMCZs are going to be carried out over the next few months and these will depend on the conservation objectives of each MCZ and the features that are to be protected.

Reference Areas

Reference Areas are sites where 'all extraction, deposition or human-derived disturbance is removed or prevented' and these will be included in the network. Discussions on Reference Area options have started, but none have yet been selected.

In order to keep our principle of transparency, the following maps show the 30 Reference Area options that have been discussed to date; however it is vital to note that they are simply a snapshot of where the discussions have got to, and do not even have a status as recommendations.

Fishing representatives have stated clearly that they will not support any reference area options, nor will they actively suggest any options within the planning discussions.

Maps

The maps on page 14–18 reflect the rough categorisation of pMCZs that we have been using in discussions throughout our process and remains work in progress.



“WE ARE CLOSE TO MEETING ALL OF OUR ECOLOGICAL TARGETS, BUT THE GREATEST STRENGTH OF THIS NETWORK IS HOW IT HAS BEEN SHAPED COLLABORATIVELY BY DIFFERENT INTERESTS.”

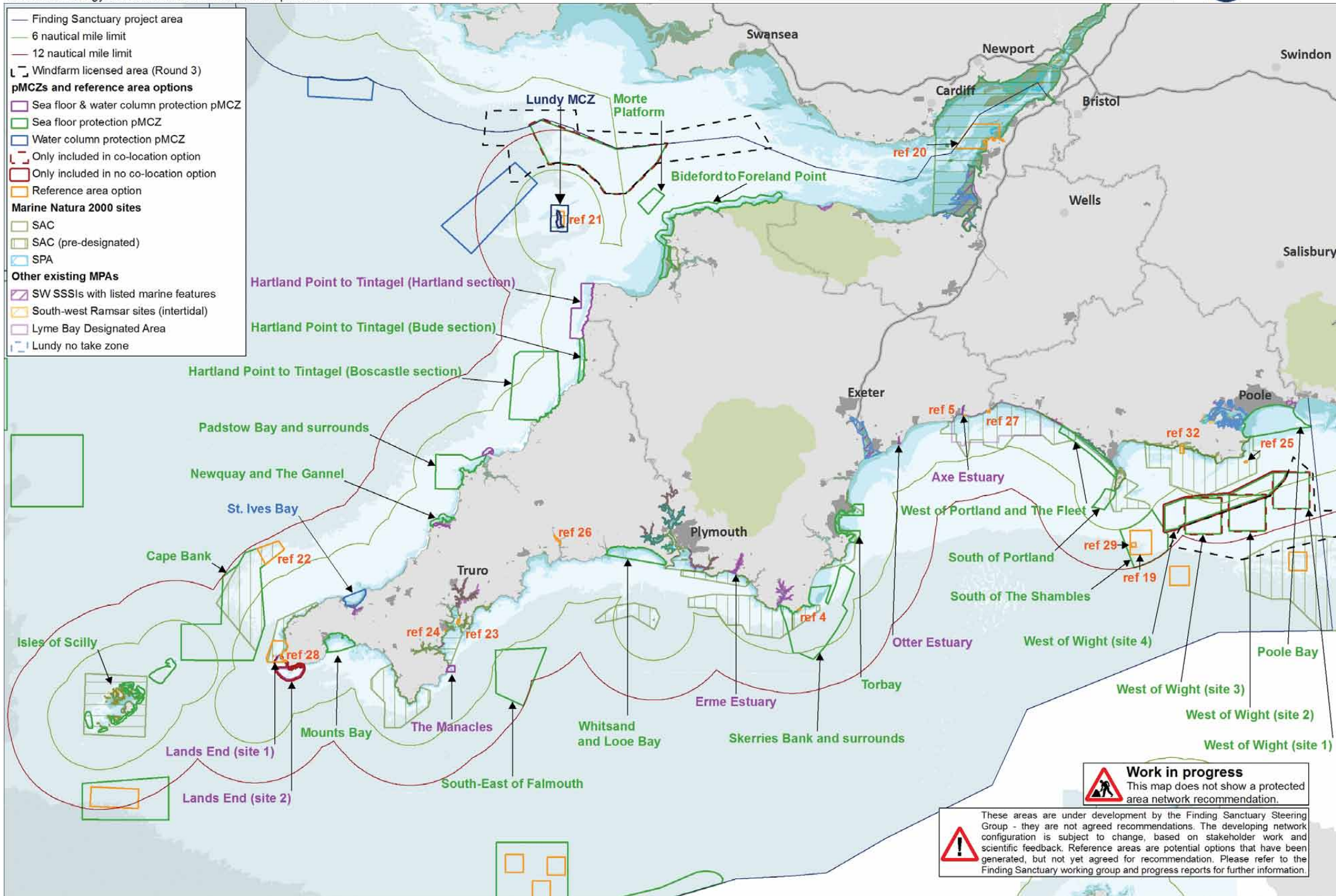
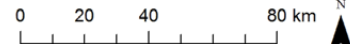
Tom Hooper, Finding Sanctuary Project Manager.



Developing Network Configuration and Reference Area Options (inshore map)

pMCZs in the south-west including alternatives depending on whether co-location of renewable energy devices and MCZs is assumed possible.

Maritime basemap © British Crown and SeaZone Solutions Limited, 2010. All Rights Reserved. Data Licence No. 062006.004. Land basemap part © OpenStreetMap & contributors, CC-BY-SA. Not to be used for navigation.



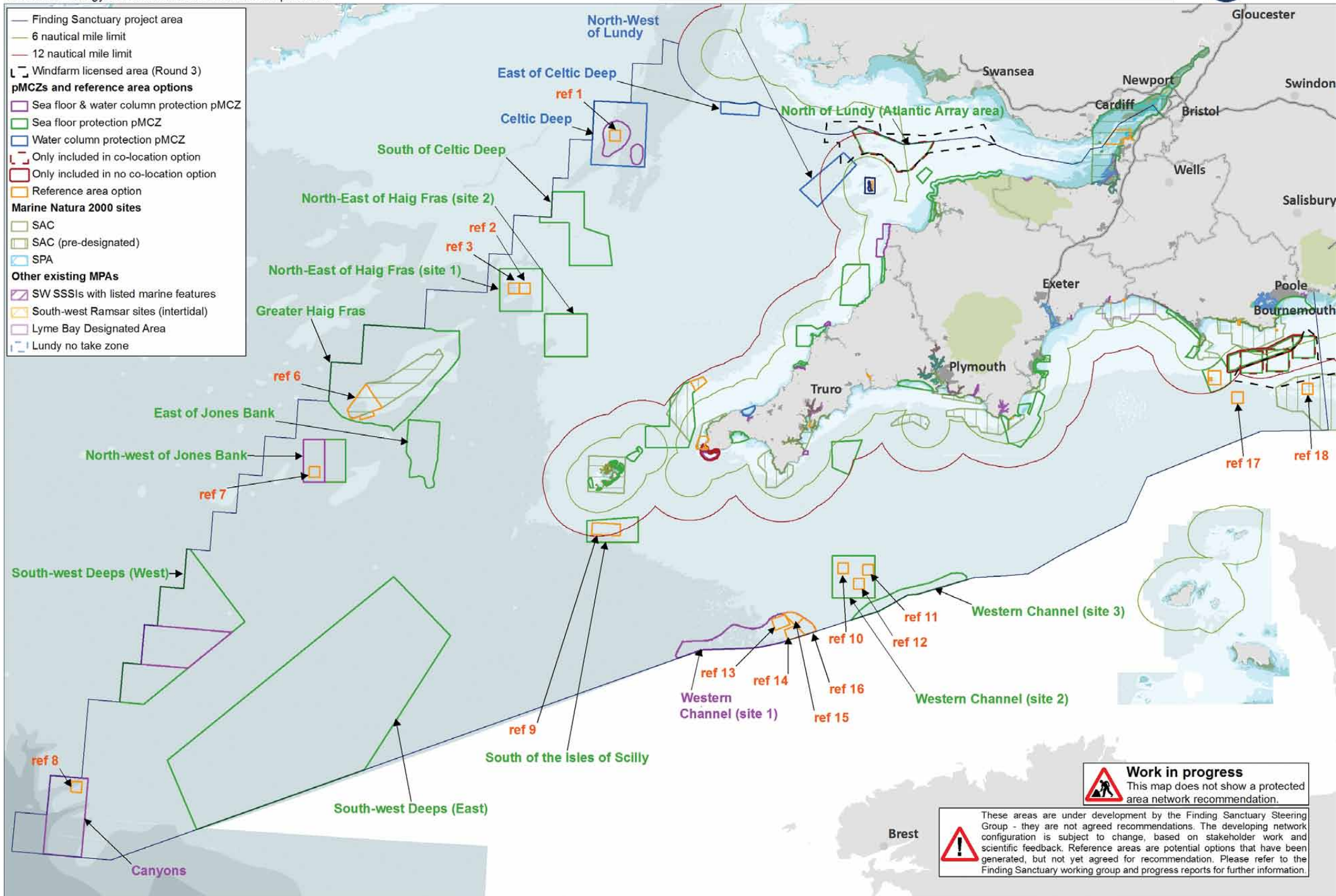
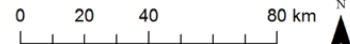
Work in progress
This map does not show a protected area network recommendation.

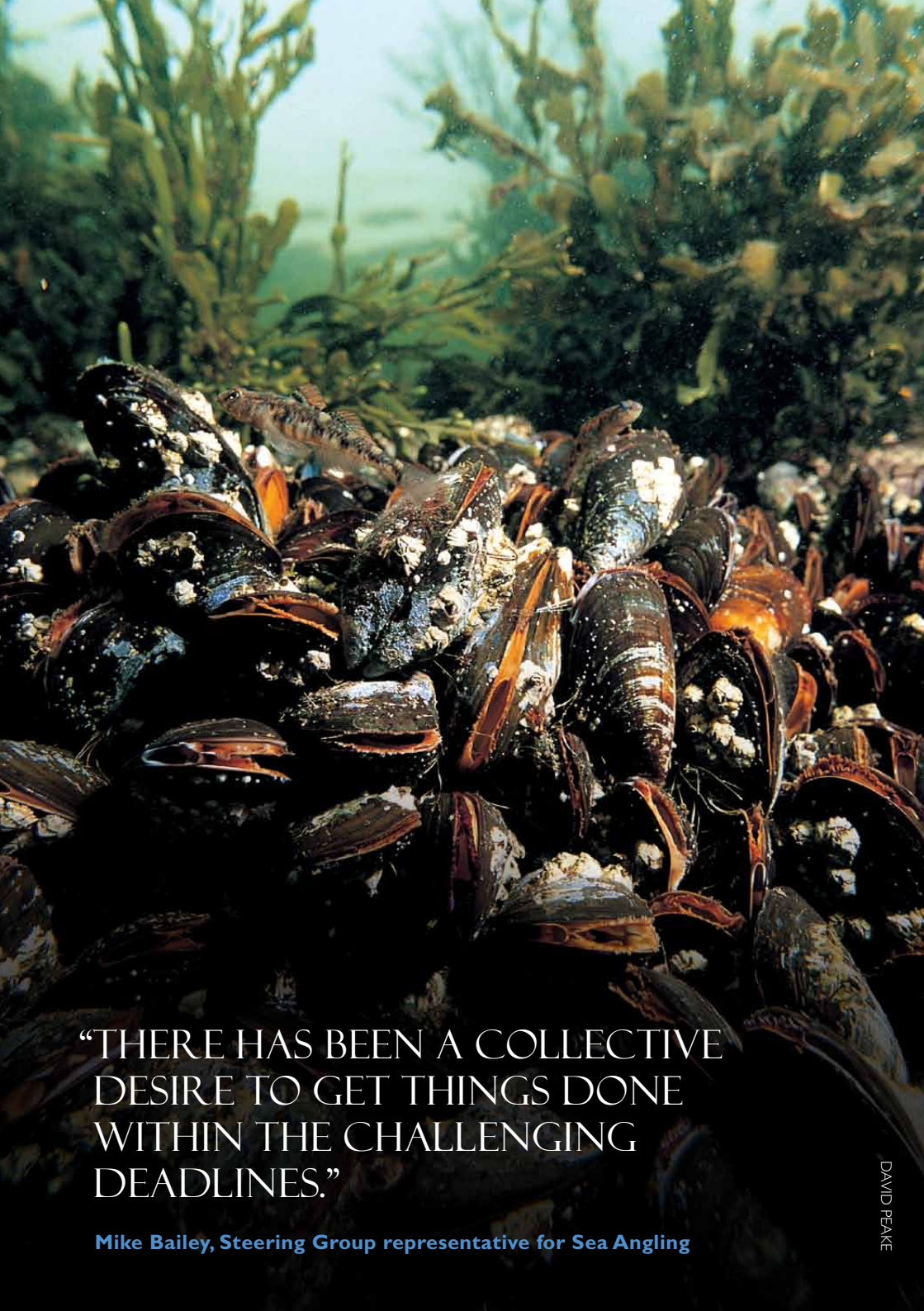
These areas are under development by the Finding Sanctuary Steering Group - they are not agreed recommendations. The developing network configuration is subject to change, based on stakeholder work and scientific feedback. Reference areas are potential options that have been generated, but not yet agreed for recommendation. Please refer to the Finding Sanctuary working group and progress reports for further information.

Developing Network Configuration and Reference Area Options (offshore map)

pMCZs in the south-west including alternatives depending on whether co-location of renewable energy devices and MCZs is assumed possible.

Maritime basemap © British Crown and SeaZone Solutions Limited, 2010. All Rights Reserved. Data Licence No. 062006.004. Land basemap part © OpenStreetMap & contributors, CC-BY-SA. Not to be used for navigation.





“THERE HAS BEEN A COLLECTIVE DESIRE TO GET THINGS DONE WITHIN THE CHALLENGING DEADLINES.”

Mike Bailey, Steering Group representative for Sea Angling

DAVID PEAKE

LOOKING AHEAD

We are in the closing stages of our planning work, and we will start to focus now on our draft final report which is due in June. Leading up to this will be a series of Working Group meetings through March and April and a Steering Group meeting in May.

At the end of the Project we will be handing over two reports:

The first will be a final Steering Group report which will be an evolution of the progress report that is being presented here. This will include maps of the final network and details of sites in the form of a narrative which will detail any outstanding assumptions and the implications to their sector.

The second output will be the impact assessment, which will detail the implications of these decisions and the costs and benefits of each designation. This report will be written by Rupert Haines, the Finding Sanctuary economist using the same data that is informing the planning. It has been developed iteratively and in partnership with the Steering Group and wider stakeholders.

March

9th & 10th - Joint Working Group meeting
15th - 3rd Progress Report feedback from the Science Advisory Panel (SAP).

April

6th and 7th - Joint Working Group meeting.

May

5th – Steering Group meeting.

June

1st - 'Draft' Final proposal submission
30th - Science Advisory Panel response to draft final proposal.

August

31st – Regional projects submit their final recommendations to the Science Advisory Panel, Natural England and the Joint Nature Conservation Committee.

September

30th - Final submission of the Impact Assessment.

November

Joint Nature Conservation Committee and Natural England deliver their final advice to Government.

2012

Three month national public consultation on UK MCZ proposals.
Final decision by Defra.



FINDING
SANCTUARY

South West Food and Drink,
Darts Farm, Topsham, Devon, EX3 0QH
www.finding-sanctuary.org

Project Partnership



OTHER MCZ REGIONAL PROJECTS

Net Gain
North Sea
www.netgainmcz.org

Balanced Seas
The South-East
www.balancedseas.org

Irish Sea Conservation Zones
Irish Sea
www.irishseaconservation.org.uk